

# REMIDIO VISIONIX VX 120+

Introducing **Remidio Visionix VX 120+**, a fully automatic diagnostic device

Significant time savings and operator independent



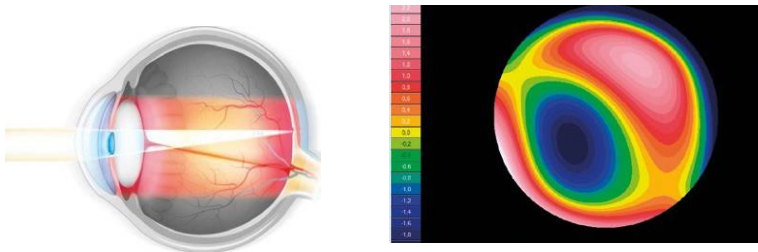
Easy Patient Management System with customizable report

**Remidio** is Innovating at the cutting edge on the future of Ophthalmic Imaging Technologies in a co-development association with **Visionix**, Israel

## Complete refraction

Differentiate between day and night vision needs

- Objective day and night refraction measurements
- Precise spherical and cylindrical values: not affected by environment or pupil size.
- Objective refraction under mesopic and photopic conditions
- Aberrometry based measurements of LOA & HOA
- Access visual acuity and quality of vision on a pupil as small as 1.2 mm
- MTF curve

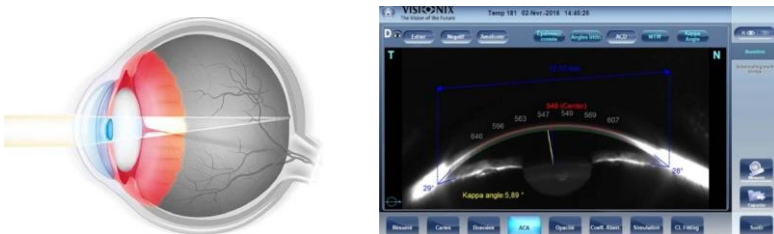


Shack-Hartmann wavefront maps measure lower-order and higher-order aberrations

## Glaucoma

Identification and monitoring

- Anterior chamber analysis
- Automatic measurement of iridocorneal angles
- Measurement of anterior chamber volume
- Measurement of anterior chamber depth
- Measurement of corneal thickness
- IOP (intraocular pressure) measurement considering corneal thickness correction

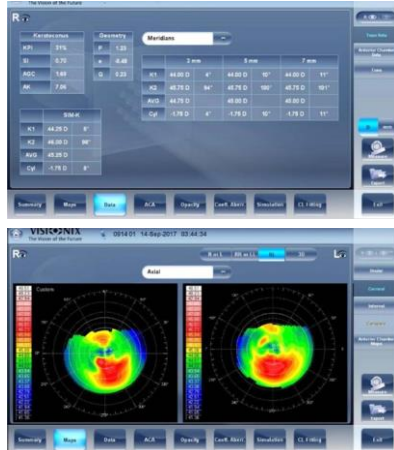
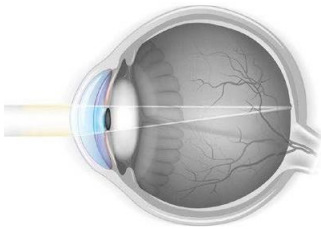


Scheimpflug imaging and non contact tonometer with soft air puff.

# Corneal Topography

## Corneal issues: Identification And Monitoring

- Corneal aberrometry
- Axial, tangential elevation and refraction maps
- Keratoconus probability index (KPI)
- Keratoconus monitoring
- Internal astigmatism measurement
- Eccentricity and meridian tables

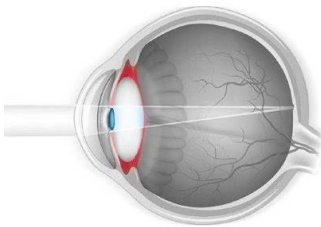


Wavefront analysis with Shack-Hartmann technology , Placidorings, Scheimpflug imaging

# Cataract

## Identification

- Visualization of crystalline opacities
- Analysis of wavefront aberrations: corneal and lenticular/internal aberrations
- Internal astigmatism measurement
- Kappa angle for IOL centering
- Z.4.0 value for aspheric implant
- Lens opacity classification (LOCS II and III scales)



Scheimpflug imaging , Retroillumination, Shack-Hartmann

## product specifications

operating mode	fully automatic
User Interface	Multi-touch, 10.1" TFT screen
observation area	ø 14 mm
output	RS232 / USB / LAN / W-LAN
dimensions (h x w x l)	570 x 312 x 530mm
weight	25 kg

## pachymetry, iridocorneal angle and pupillometry

method	cont. vertical scan with Scheimpflug camera
pachymeter measuring range	150-1300 µm
pachymeter resolution	+/- 10 microns
IC angle measuring range	0°-60°
IC resolution	0.1°
pupil illumination	Blue light 455 nm

## corneal topography by specular reflection

number of rings	24
number of measuring points	6,144
number of points analysed	More than 100,000
covered corneal dia area at 43D	From 0.75 mm to more than 10 mm
measurement range	From 37.5 D to 56 D
repeatability	0.02 D
method	placido rings

## tonometer

measuring range	7 mmHg to 44mmHg
other features	<b>retro illumination</b>

## Power mapping and Refraction

visit [remidio.com](http://remidio.com)

mail [contactus@remidio.com](mailto:contactus@remidio.com)

call +91 767 6759999

